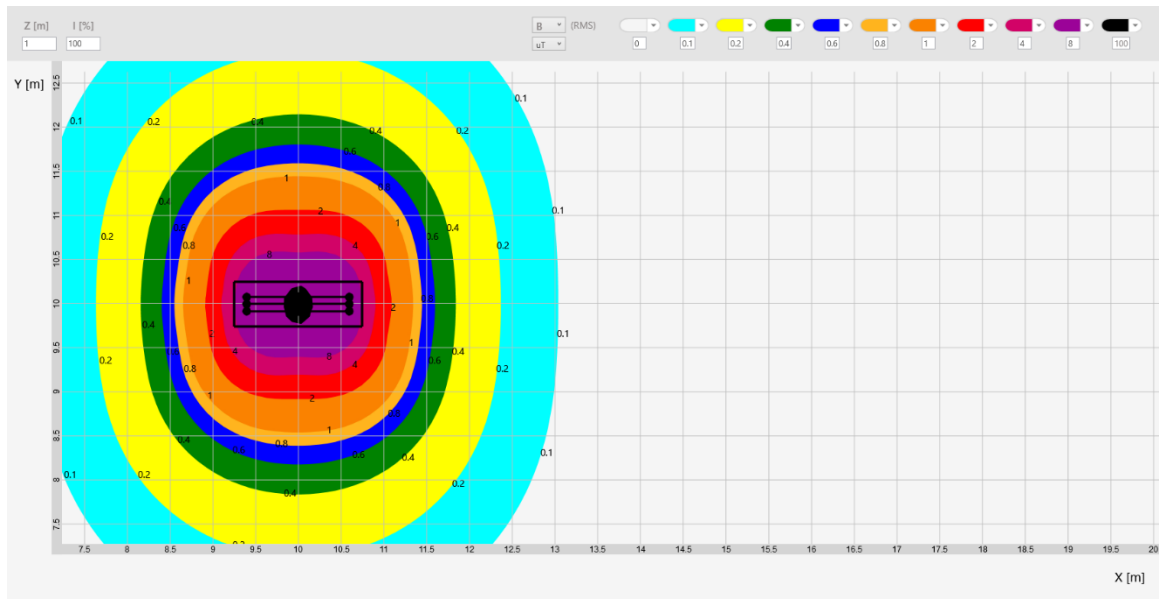
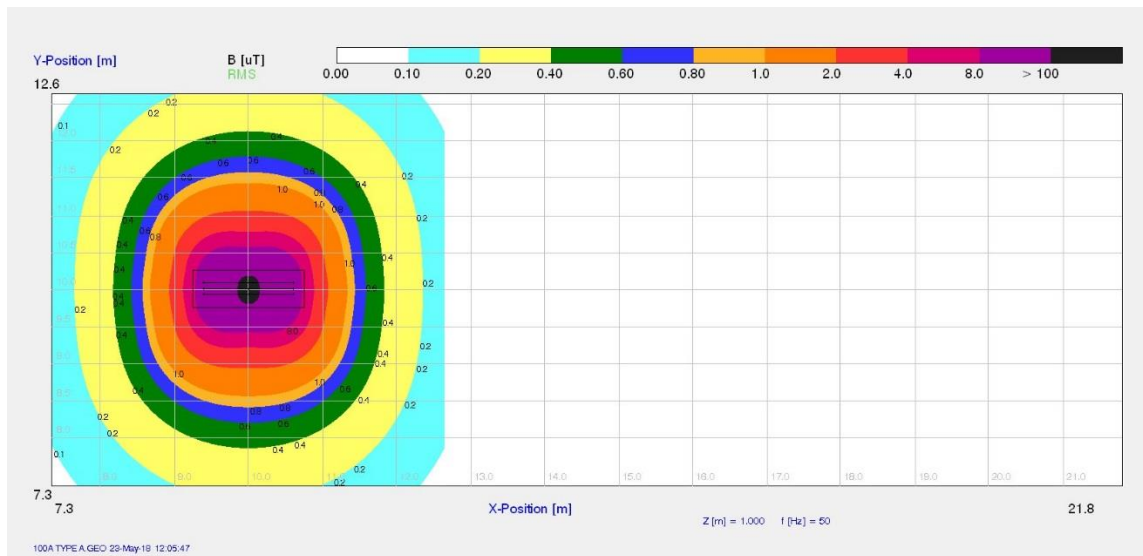


# Narda EFC 400 Vs Binrad simulation software

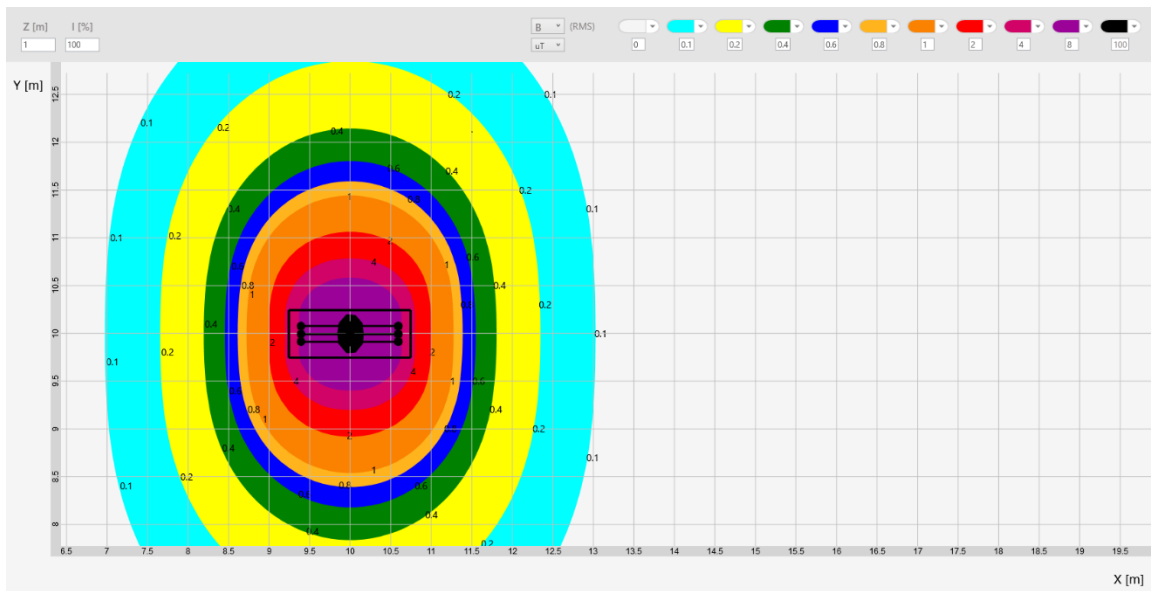
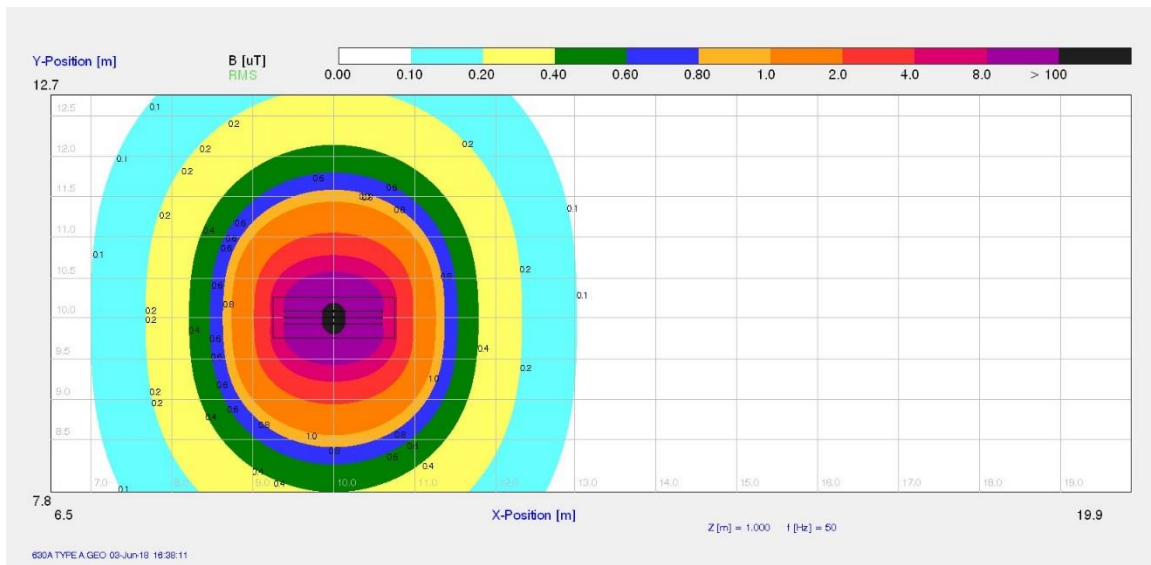
The following is a comparison of the results obtained with the Narda and Binrad simulation software. The comparison relates to 7 different projects. For each project, the result of Narda is presented and it immediately followed by Binrad result. Finally, a table summarizes the comparison.

## 100A Cabinet



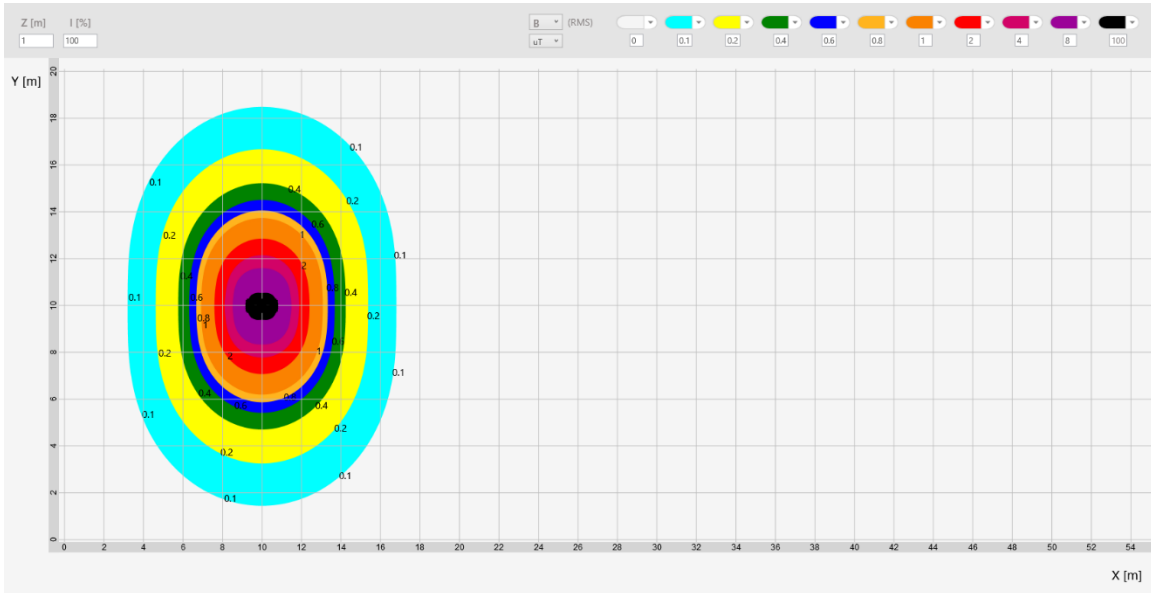
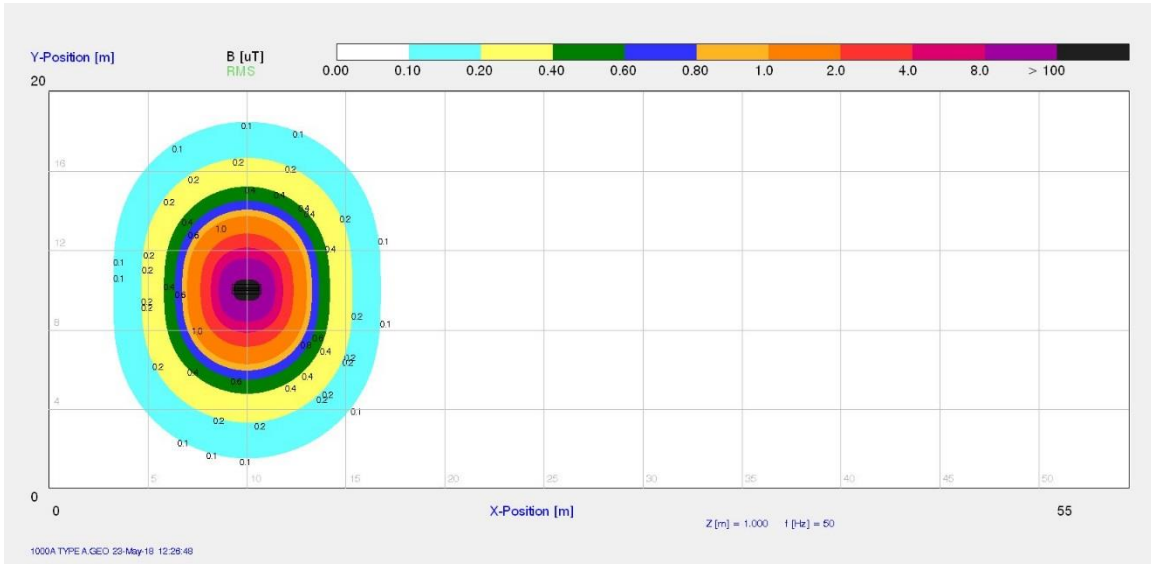
B [uT]	Narda distance [m]	Binrad distance [m]
0.1	3	3.02
0.2	2.32	2.35
0.4	1.78	1.83
0.6	1.56	1.58
0.8	1.42	1.43
1	1.31	1.33
2	1.05	1.08
4	0.87	0.89
8	0.7	0.72
100	0.14	0.15

## 630A Cabinet



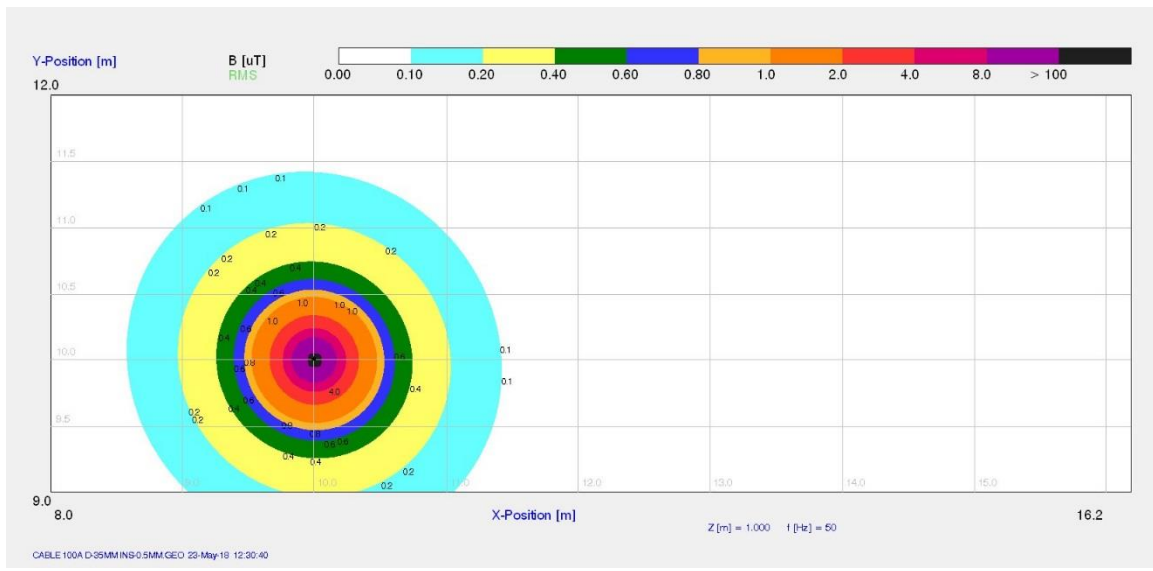
B [uT]	Narda distance [m]	Binrad distance [m]
0.1	3.01	3.01
0.2	2.32	2.33
0.4	1.78	1.79
0.6	1.5	1.53
0.8	1.37	1.37
1	1.23	1.26
2	0.95	0.98
4	0.68	0.78
8	0.54	0.6
100	0.12	0.16

# 1000 A Cabinet



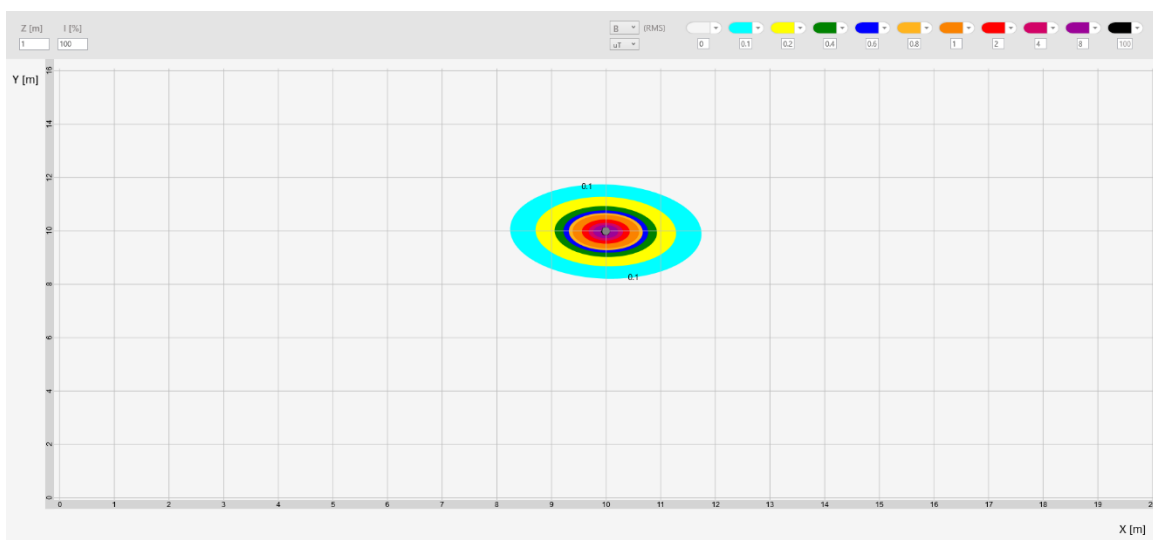
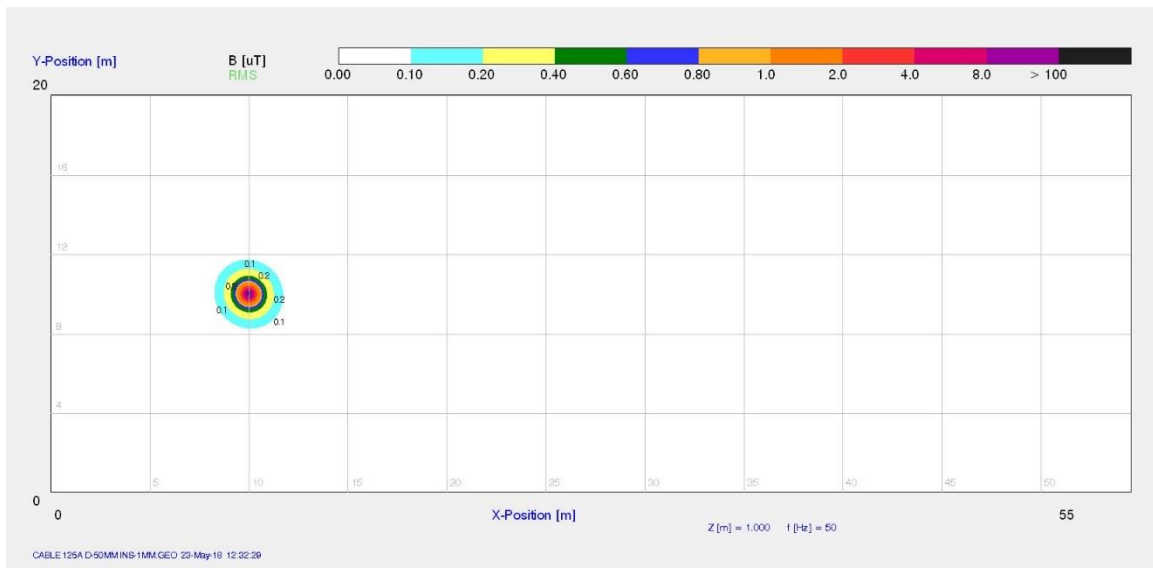
B [uT]	Narda distance [m]	Binrad distance [m]
0.1	6.68	6.75
0.2	5.25	5.32
0.4	4.13	4.18
0.6	3.55	3.63
0.8	3.24	3.28
1	2.95	3.02
2	2.31	2.36
4	1.75	1.8
8	1.35	1.43
100	0.6	0.65

# CABLE 100A D-35MM INS-0.5MM



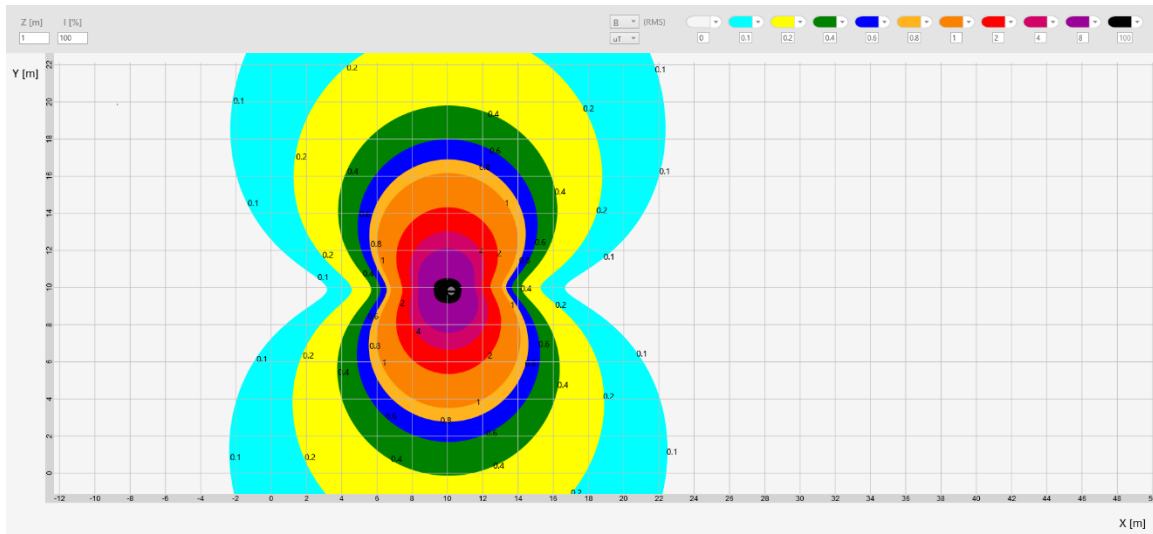
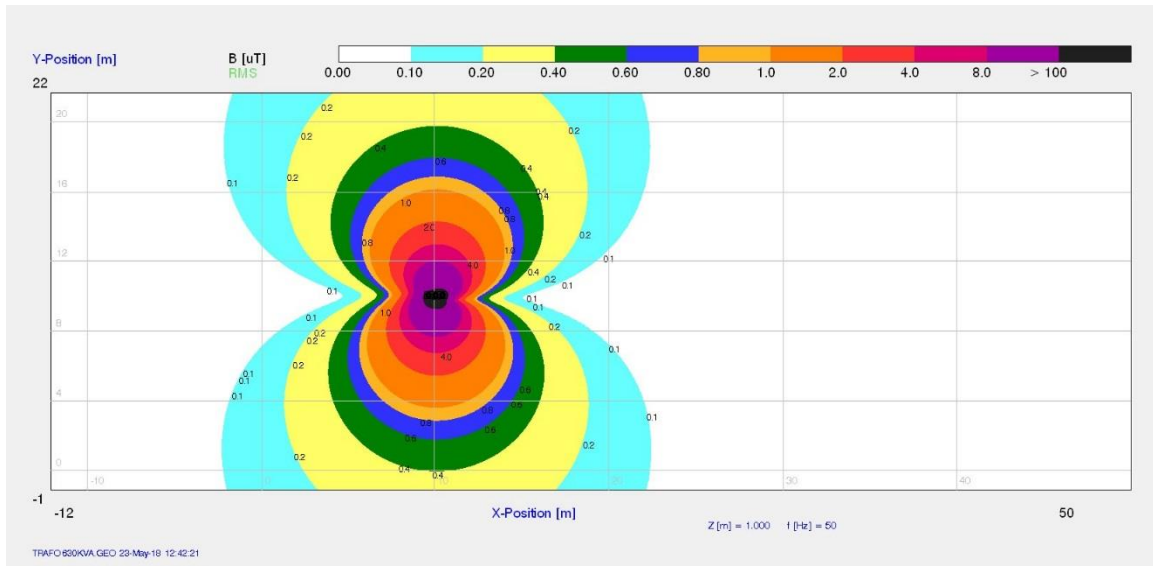
B [uT]	Narda distance [m]	Binrad distance [m]
0.1	1.41	1.39
0.2	1.04	1.01
0.4	0.75	0.72
0.6	0.6	0.59
0.8	0.54	0.51
1	0.48	0.46
2	0.33	0.32
4	0.24	0.23
8	0.16	0.16
100	0.06	0.04

## CABLE 125A D-50MM INS-1MM



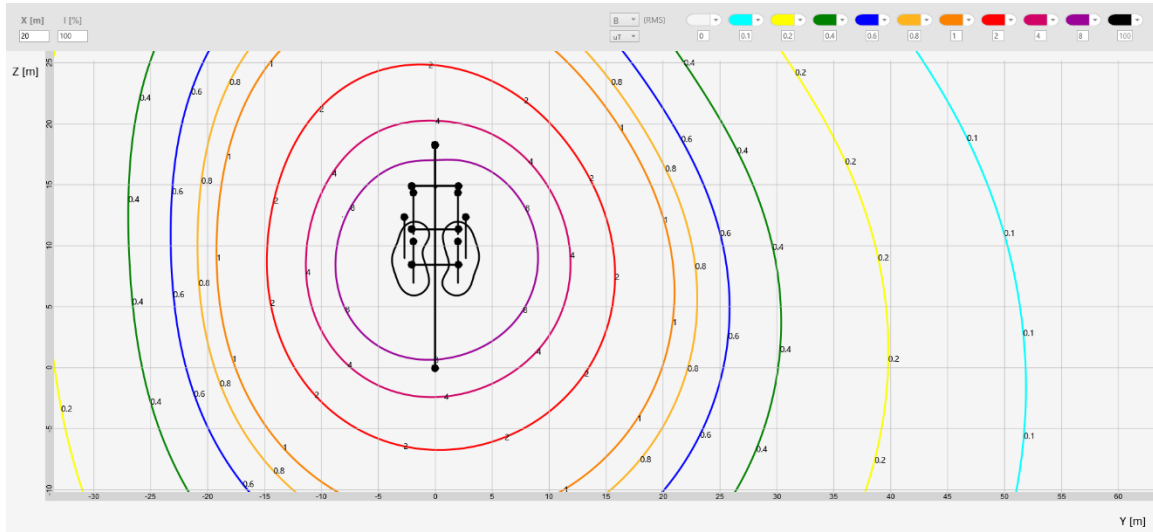
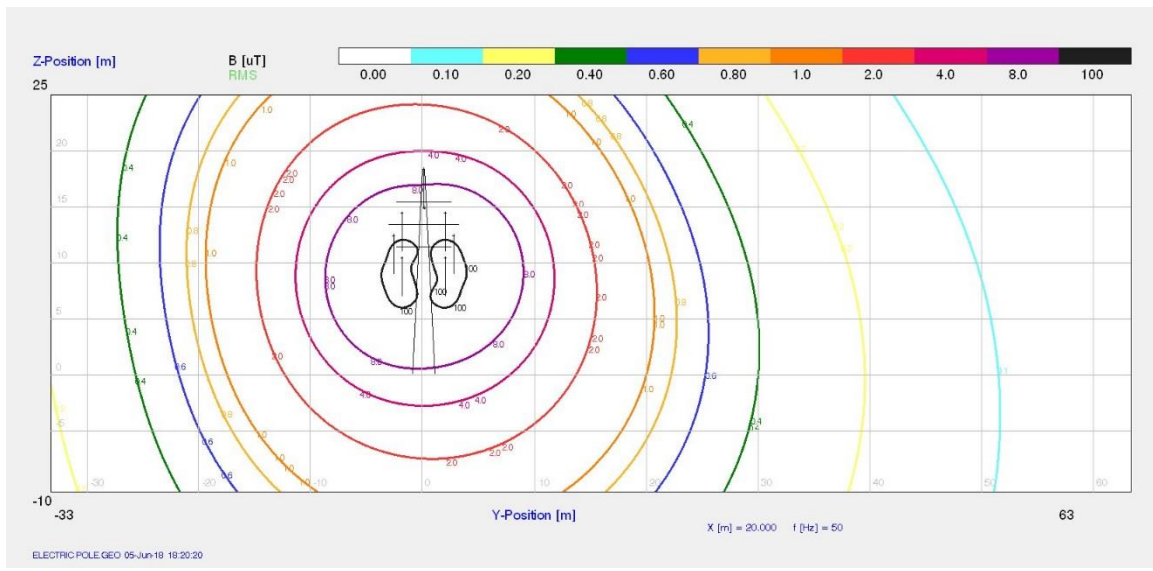
B [uT]	Narda distance [m]	Binrad distance [m]
0.1	1.69	1.72
0.2	1.24	1.26
0.4	0.87	0.91
0.6	0.72	0.75
0.8	0.61	0.65
1	0.55	0.58
2	0.36	0.41
4	0.25	0.29
8	0.17	0.2
100	0.07	0.06

# TRAFO 630KVA



B [uT]	Narda distance [m]	Binrad distance [m]
0.1	5.2	6.6
0.2	4.15	5.23
0.4	3.25	4.15
0.6	2.85	3.61
0.8	2.55	3.27
1	2.53	3.05
2	1.87	2.4
4	1.56	1.89
8	1.22	1.5
100	0.74	0.75

# Electric Pole



B [uT]	Narda distance [m]	Binrad distance [m]
0.1	50.5	50.32
0.2	38.75	38.71
0.4	29.5	29.6
0.6	25	25.31
0.8	22.75	22.54
1	20.25	20.67
2	15.75	15.67
4	12.5	11.85
8	9	8.95
100	3.75	3.76